



Climatic Bulletin

July 2011

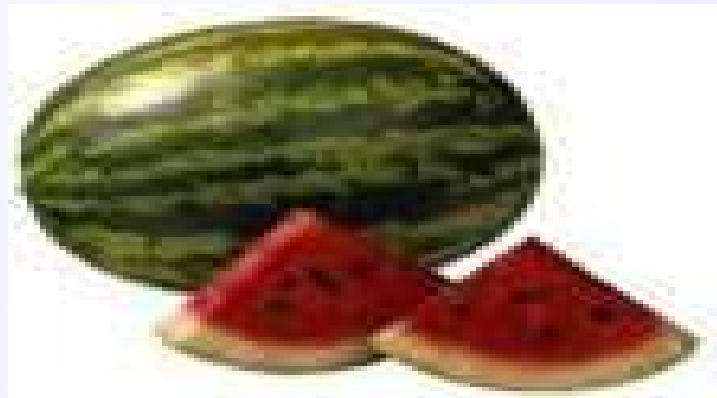
 **Max
temperature**

 **Min
temperature**

 **Mean
temperature**

 **Precipitation**

 **Sunshine
duration**



July was a typical summer month for Greece. A dry month which characterized by restricted unstable weather conditions even if over North and Central mainland. In parallel, a four days period of very high temperatures (not extreme) recorded in the middle (18-21/7). Meanwhile, the gale force northern winds had a very long appearance(8-16/7) .



ΕΘΝΙΚΗ
ΜΕΤΕΩΡΟΛΟΓΙΚΗ
ΥΠΗΡΕΣΙΑ

HELLENIC NATIONAL METEOROLOGICAL SERVICE

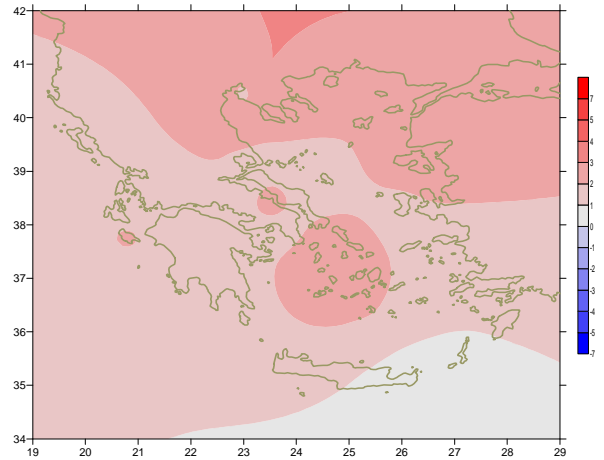


Temperature

First Decameron

Minimum: From the highest values:
 25°C in Samos (8/7), 25.6°C in Paros (9/7) and 26.6°C in Hellinikon (9/7).

Maximum: High values at the end of the period.
 More specific:
 39.4°C in Leonidio at 9/7. 38.8°C in Serres at 10/7
 38.8°C in Hellinikon at 10/7

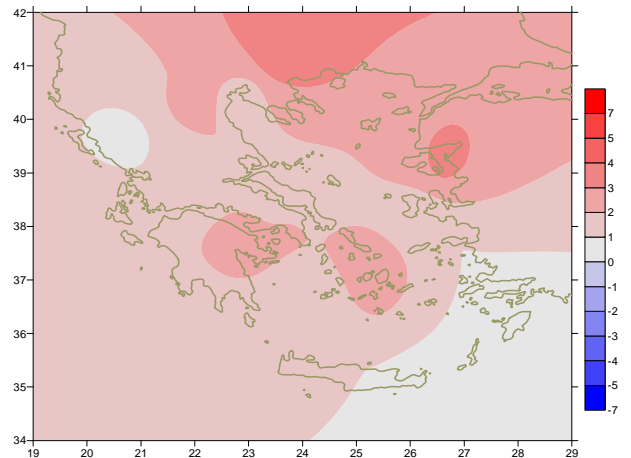


Deviation of mean temperature from normal values

Second Decameron

Minimum: Relatively high values in the middle of the period.
 E.g (the highest): 28°C in Elefsina at 18/7, 26°C in Mikonos and 25.8°C in Ikaría at 15/7.

Maximum: High values mainly at the end.
 More specific:
 41°C in Leonidio (11/7), 40.2°C in Serres (19/7),
 40.8°C in Larisa (20/7), 40.2°C in Tanagra (20/7),

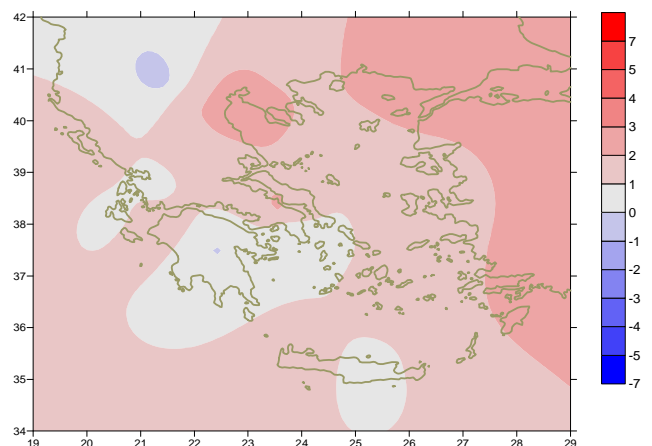


Deviation of maximum temperature from normal values

Third Decameron

Minimum: The values decreased from 21/7 over North and west mainland.
 More specific(from the lowest):
 7.2°C in Florina, 12°C in Kastoria and 13°C in Ioannina at 22/7.

Maximum: relatively high in the middle of period.
 For example:
 35.8°C in Samos at 23/7 and 36°C in Serres at 24/7.



Deviation of minimum temperature from normal values



Precipitation

First Decameron

Remarkable precipitation amounts over northern mainland.

Period. More specific:

3mm in Florina and

12mm in Chissoupoli(Kavala) at 1/7

11mm in Alexandroupoli at 4/7.

Second Decameron

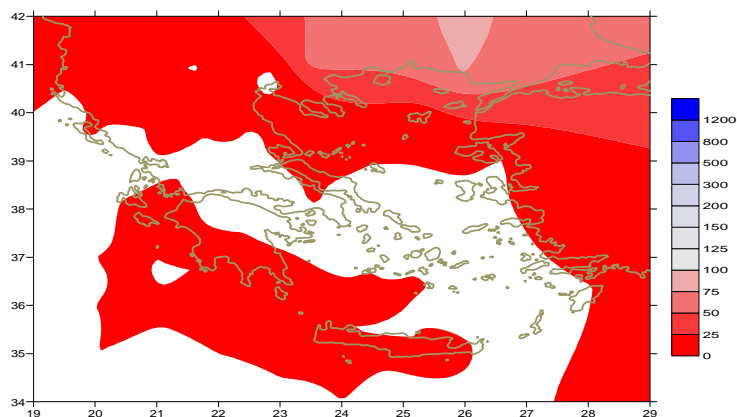
Not remarkable precipitation amounts over

Met. Stations of our network.

Third Decameron

Not remarkable precipitation amounts over

Met. Stations of our network.



Deviation of monthly precipitation height from normal values (%)

TABLE OF MEAN VALUES

STATION	Longitude	Latitude	Tmean	TX	TN	RR	INST
SERRES	23,53	41,07	29,1	36	19,7	9	352
FLORINA	21,40	40,78	25,1	30,7	13,8	4	333
KASTORIA	21,27	40,45	25,5	31,1	14,1	0	351
TRIKALA_IMATHIAS	22,55	40,60	28,6	34,3	19,5	5	312
THESSALONIKI	22,97	40,52	28,4	32,7	21,4	0	387
CHRYSOUPOLI	24,62	40,92	27,1	30,9	20,8	14	326
ALEXANDROUPOLI	25,95	40,85	28,4	32,7	20,3	11	362
KOZANI	21,83	40,28	26,9	31,9	17,3	6	
KERKYRA	19,92	39,62	27,8	31,9	20,1	0	386
IOANNINA	20,82	39,70	26	31,5	15,8	0	356
PREVEZA	20,76	38,91	26,8	31	21	0	
TRIKALA_THESSALIAS	21,77	39,52					
LARISA	22,45	39,65	29,5	35	19,5	0	367
LIMNOS	25,23	39,92	27,6	31,3	21,5	1	382
ARTA	21,00	39,17					
AGHIALOS	22,78	39,21	28,6	32,9	20,1	0	376
MYTILINI	26,60	39,05	29,3	33,7	23,2	0	416
VELO	22,77	37,97	29,1	33,4	20,5	0	392
AGRINIO	21,35	38,60	28,2	34,4	18,1	0	405
LAMIA	22,43	38,87					
ANDRAVIDA	21,28	37,92	27,3	31,2	19,4	0	380
SKYROS	24,48	38,96	27,1	29,3	22,5	0	365
ARGOSTOLI	20,50	38,12	27,4	30,6	21,4	0	397
ARAXOS	21,42	38,15	28,1	32,1	20,4	0	373
TANAGRA	23,57	38,33	29,4	33,8	20,2	0	396
HIOS	26,13	38,35	28,1	31,2	22,3	0	383
PYRGOS	21,42	37,67					
TRIPOLI	22,40	37,52	26,4	32,6	14,2	0	398
TATOI	23,78	38,10	28,6	32,6	21,5		
HELLINIKO	23,73	37,90	29,6	33,7	23,4		402
ELEYSINA	23,55	38,07	30,4	34,6	24,2	0	
ZAKYNTHOS	20,88	37,75	28,8	32,5	21,7	0	397
SAMOS	26,92	37,68	29,7	33,5	24	0	
ARGOS	22,75	37,63					
KALAMATA	22,02	37,07	27,5	32,6	18,7	0	384
NAXOS	25,37	37,10	27,1	29,5	22,9	0	409
METHONI	21,70	36,82					
MHLOS	24,43	36,73					
SPATA	23,95	37,95	27,7	32,7	21,1	0	
KOS	27,08	36,80	27,1	31,2	23,3	0	
KYTHIRA	22,98	36,15					
SANTORINI	25,41	36,41	27,5	30,4	23,6	0	356
SOUDA	24,12	35,55	27,9	32	22,6	0	379
RODOS	28,08	36,40	28,1	30,8	24,4	0	393
MYKONOS	25,35	37,43	26,8	29,7	23,4	0	
HERAKLEIO	25,18	35,33	27,2	29,6	21,9	0	390
IERAPETRA	25,73	35,02					
SITEIA	26,10	35,21	26,5	29,1	23,4	0	402
RETHYMNO	24,50	35,36					
TYMPAKI	24,76	35,06	28,5	32	20,8	0	400
KASTELI	25,33	35,18	26,2	30,6	20,1	0	362
KARPATOS	27,15	35,42	26,4	29,4	24,3	0	
PAROS	25,13	37,02	27,9	31,4	22,8	0	390
SYROS	24,95	37,42	27,6	30,5	23,4	0	400
IKARIA	26,35	37,68	25,3	27,6	24,3	0	

Climatic Bulletin

General Description

Precipitation amounts were lower than normal values almost everywhere.
 {note: the normal precipitation height is approximately 0mm over most parts of Central and Southern Greek area}.
 In contrast the mean temperature varied higher than normal values almost everywhere (Greek islands and mainland).

Climatic Parameters :

- ❖ **Normal Values** : normal values for various parameters (temperature, precipitation, etc) are defined as mean values calculated for 30 years. These normal values are used as basis and represent the mean situation. They can be specified in 10 daily, monthly, seasonally and yearly level and are used for the trend comparison of 10 days, month, season or year as: rainy decameron, mild winter, cool August etc.

Measurement :

- ❖ **Precipitation**
 1 mm = 1 litre/m²

Table Legend :

Tmean : Mean Temperature
 TN : Minimum Temperature
 TX : Maximum Temperature
 RR : Precipitation height(mm)
 INST : Sun Duration (hours)

UTC hours (Universal Time Coordinates) in Greece :

- ❖ Winter : UTC hour = local hour - 2
- ❖ Summer : UTC hour = local hour - 3

© Hellenic National Meteorological Service
 Reproduction is prohibited without written authorization
 14 El.Venizelou 16777
 Helliniko, Athens
 Greece